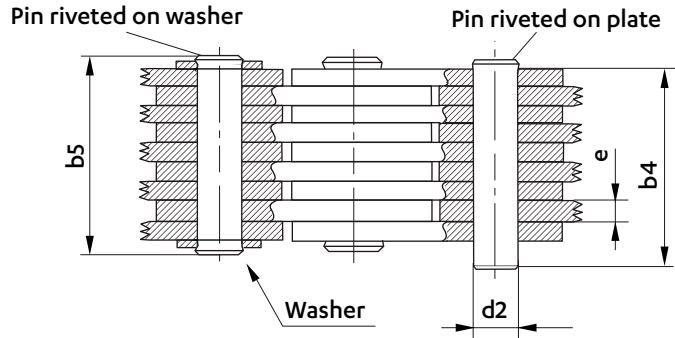
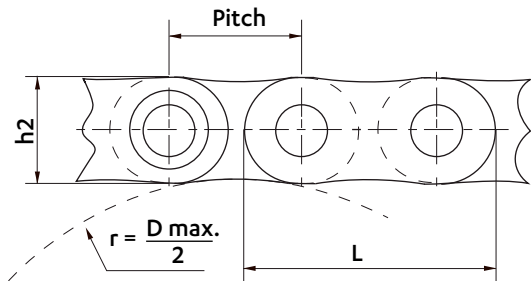


BALANCE LEAF CHAINS

Dimensions in mm

BALANCE LEAF CHAINS



Options	Plates	Pins
Option I	Untreated steel	Untreated steel
Option II	Untreated steel	Untreated steel
Option III	Treated steel	Case-hardened alloy steel

Pitch	Lacing	ACCUMULATION PINS			PLATES		DRUM		OPTION I		OPTION II		OPTION III		Working surface	Weight
		Diameter	WIDTH		Thickness	Length	Diameter	min.	max.	Min. breaking load	Working load	Min. breaking load	Working load	Min. breaking load		
P	n et n+1	d2	b4	b5											e	L
40	1-2	14,4	27	33	6	77	80	93	38	7,7	48	8,6	56	9,4	86	4,6
	2-3		40	46					77	15,5	96	17,2	114	19,0	172	7,5
	3-4		53	59					116	23,3	114	26,0	170	28,5	259	10,4
	4-5		65	71					155	31,0	190	34,5	230	38,0	345	13,3
	5-6		78	84					195	39,0	240	43,0	280	47,0	432	16,2
	6-7		90	96					230	46,0	290	52,0	340	57,0	518	19,1
	7-8		103	109					270	54,0	330	60,0	400	66,0	604	22,0
	8-9		116	122					310	62,0	380	69,0	450	76,0	691	25,0
	9-10		128	134					350	70,0	430	78,0	510	85,0	777	28,0
	60		1-2	21,6					33	41	8	116	120	140	77	15,5
2-3		50	58		155	31,0	190	34,5	230	38,0					345	14,6
3-4		66	74		230	46,0	290	52,0	340	57,0					518	20,2
4-5		84	92		310	62,0	380	69,0	450	76,0					691	25,2
5-6		100	108		390	78,0	480	86,0	570	95,0					864	31,5
6-7		117	125		460	93,0	580	103,0	680	113,0					1036	37,1
7-8		133	141		540	109,0	670	121,0	800	133,0					1209	42,8
8-9		150	158		620	124,0	770	138,0	910	152,0					1382	48,5
9-10		166	174		700	140,0	860	155,0	1020	171,0					1555	54,0
90		1-2	32,4		44	54	11	170	180	210					160	32,0
	2-3	67		77	320	64,0					400	72,0	470	78,0	712	28,0
	3-4	90		100	480	96,0					600	108,0	700	117,0	1069	38,0
	4-5	113		123	640	128,0					800	144,0	940	157,0	1425	49,0
	5-6	135		145	800	160,0					1000	180,0	1170	196,0	1782	60,0
	6-7	158		170	960	192,0					1200	216,0	1400	235,0	2138	71,0
	7-8	182		194	1120	224,0					1400	250,0	1640	274,0	2494	81,0
	8-9	205		217	1280	256,0					1600	290,0	1880	314,0	2851	92,0
	9-10	227		339	1440	228,0					1800	320,0	2110	352,0	3207	103,0