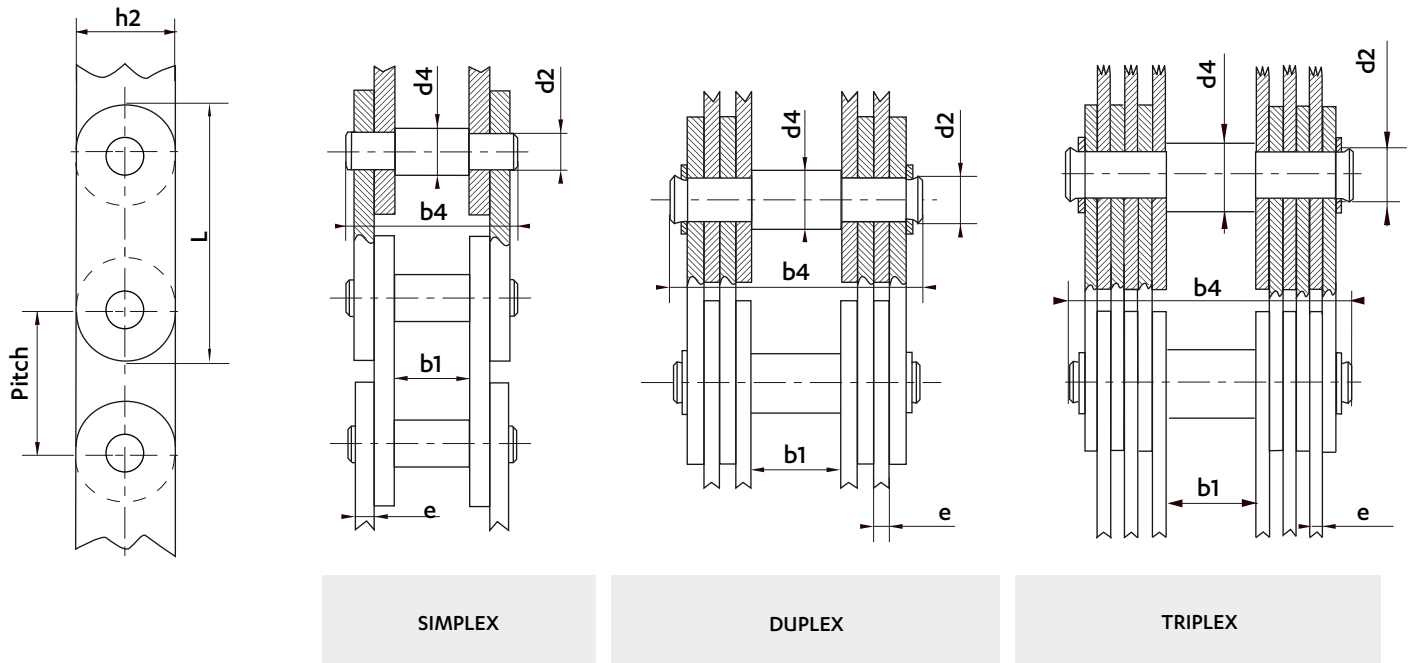


STRAIGHT SIDE PLATES GALLE CHAINS

Dimensions in mm

STRAIGHT SIDE PLATES - 1961 SERIES



Options	Plates	Bearing pins	Safety factor K to be applied	Max. speed m/min	Max. pressure on articulation MPa (N/mm <sup>2</sup> )
Option I	Untreated steel	Untreated steel	5,0	20	80
Option II	Untreated steel	Untreated steel	5,5	30	100
Option III	Treated steel	Treated steel	6,0	40	110
Option+ IV	Treated alloy steel	Treated alloy steel	6,0	40	110

ABOVE THE MAXIMUM PRESSURE THE LUBRICATION OF THE ARTICULATIONS IS NO LONGER GUARANTEED

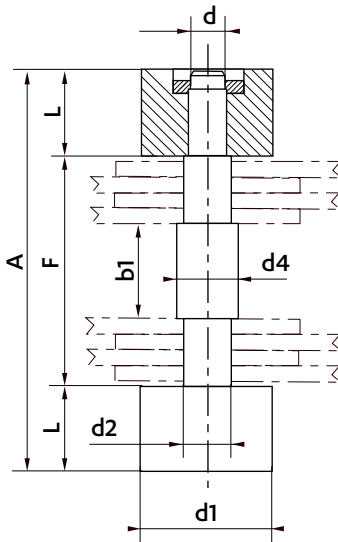
Chain ref	Pitch	BEARING PINS				PLATES			MIN. BREAKING LOAD				Working surface mm <sup>2</sup>	Weight kg/m	
		Diameter d4	Width between inner plates b1	Holding Ø d2	Width over riveted pins b4	Width h2	Thickness e	Length L	Option I	Option II	Option III	Option IV			
<b>SIMPLEX (RIVETED ON LINK)</b>															
G 20	20	8	10	7,2	32	16	4	38	25,6	32	38,4	-	57,6	2,3	
G 25	25	10	13	9,0	39	20	5	48	40,0	50	60,0	-	90,0	3,6	
<b>DUPLEX (RIVETED ON WASHER)</b>															
G 30	30	12	15	10,8	51	25	3	58	57,6	72	86,4	100	129,0	5,1	
G 40	40	16	20	14,4	68	34	4	77	102,4	128	153,6	180	230,0	9,0	
G 50	50	20	25	18,0	81	40	5	96	160,0	200	240,0	280	360,0	14,0	
G 60	60	24	30	21,6	97	50	6	116	230,4	288	345,6	400	518,0	20,2	
G 75	75	30	38	27,0	126	60	8	144	360,0	450	540,0	630	864,0	31,5	
G 90	90	36	45	32,4	143	70	9	170	518,4	648	777,6	900	1166,0	45,5	
G 105	105	42	53	37,8	173	80	11	197	705,6	882	1058,0	1230	1663,0	62,0	
<b>TRIPLEX (RIVETED ON WASHER)</b>															
G 120	120	48	60	43,2	186	100	8	234	921,6	1152	1383,0	1600	2073,0	81,0	
G 135	135	54	68	48,6	220	110	10	260	1166,4	1458	1750,0	2040	2916,0	102,0	
G 150	150	60	75	54,0	229	120	10	286	1440,0	1800	2160,0	2520	3240,0	126,0	
G 170	170	68	85	61,2	267	140	12	325	1849,6	2312	2775,0	3240	4405,0	162,0	
G 195	195	78	98	70,2	298	160	13	370	2433,6	3042	3650,0	4260	5475,0	213,0	
G 220	220	88	110	79,2	336	180	15	420	3097,6	3872	4647,0	5420	7128,0	271,0	
G 245	245	98	123	88,2	392	200	18	470	3841,6	4802	5763,0	6700	9525,0	336,0	

Dimensions in mm

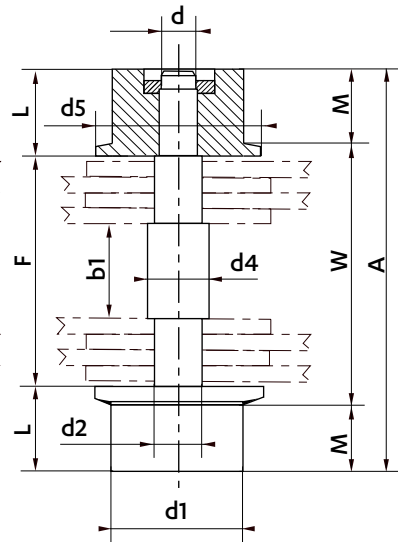
## STRAIGHT SIDE PLATES - 1961 SERIES

### BEARING PINS WITH ACCUMULATION WHEELS

#### PLAIN WHEELS

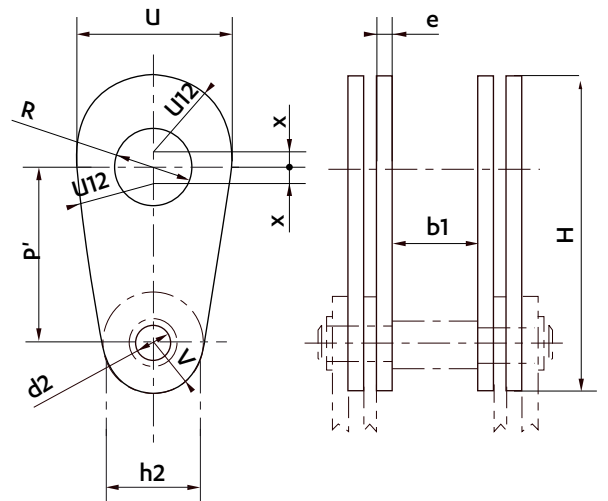


#### FLANGED WHEELS



### SPECIAL ATTACHMENT LINKS

Only valid for options I and II



Chain ref	PINS WITH OUTBOARD WHEELS								SPECIAL ATTACHMENT LINKS							
	Wheels				Extended Bearing Pins				Pitch	Diameter in chain	Fixing hole diameter	major diameter	Small radius	Safety travel	Overall length	Thickness
	Plain diameter	Flanged diameter	Overall width	Bearing width	Diameter	Width over flange	Width between wheels	Overall width								
d1	d5	L	M	d	W	F	A	P'	d2	R	U	V	X	H	e	
<b>SIMPLEX</b>																
G 20	-	-	-	-	-	-	-	-	30	7,2	14	28	9,0	1,5	54,5	4
G 25	-	-	-	-	-	-	-	-	38	9,0	18	36	12,0	2,0	70,0	5
<b>DUPLEX</b>																
G 20	20	25	14,5	9	8	54	43	72	45	10,8	20	40	14,5	2,0	81,5	3
G 40	25	32	17,0	12	10	70	60	94	60	14,4	28	56	19,0	3,0	110,0	4
G 50	30	40	20,0	14	14	84	72	112	76	18,0	36	72	23,0	3,5	138,5	5
G 60	40	50	26,0	19	17	101	86	138	90	21,6	42	84	29,0	4,0	165,0	6
G 75	50	65	34,0	24	23	134	114	182	115	27,0	55	110	35,0	5,0	201,0	8
G 90	60	80	37,0	27	28	150	130	204	135	32,4	65	130	41,0	6,0	247,0	9
G 105	70	90	46,0	34	30	181	157	249	160	37,8	75	150	47,0	7,0	289,0	11
<b>TRIPLEX</b>																
G 120	80	100	50,0	40	35	192	172	272	180	43,2	80	160	58,0	8,0	326,0	8
G 135	90	110	54,0	43	36	228	206	314	205	48,6	90	180	63,0	9,0	367,0	10
G 150	100	120	58,0	47	40	235	213	329	230	54,0	110	220	69,0	10,0	419,0	10
G 170	110	130	63,0	50	50	275	259	375	260	61,2	120	240	80,0	12,0	472,0	12
G 195	130	160	77,0	60	60	320	276	430	300	70,2	140	280	88,0	14,0	542,0	13
G 220	140	170	83,0	65	60	348	312	478	330	79,2	160	320	103,0	16,0	609,0	15
G 245	150	180	84,0	65	70	408	370	538	370	88,2	170	340	115,0	17,0	672,0	18