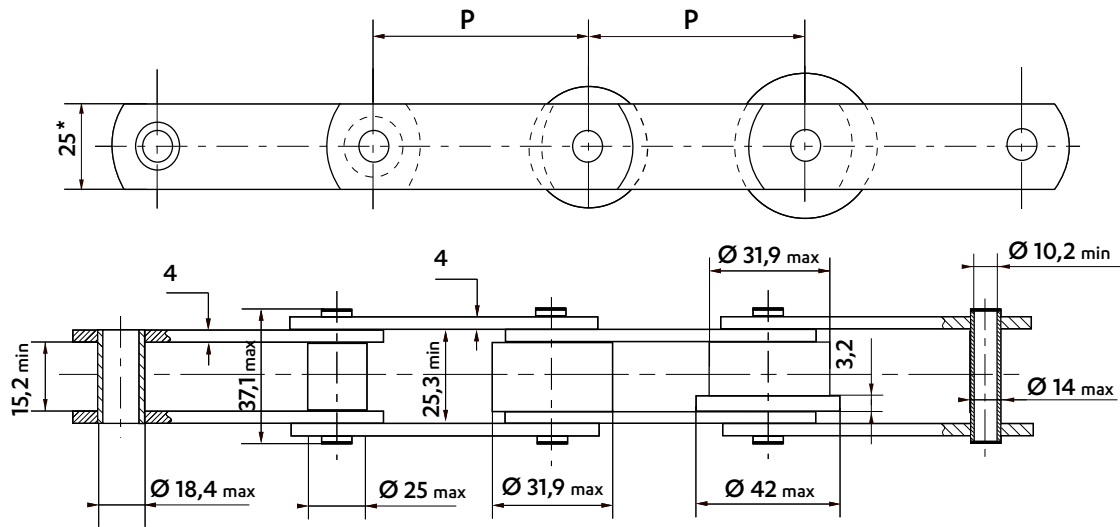


BS STANDARD CHAINS - **MC27 (ZM 28)**

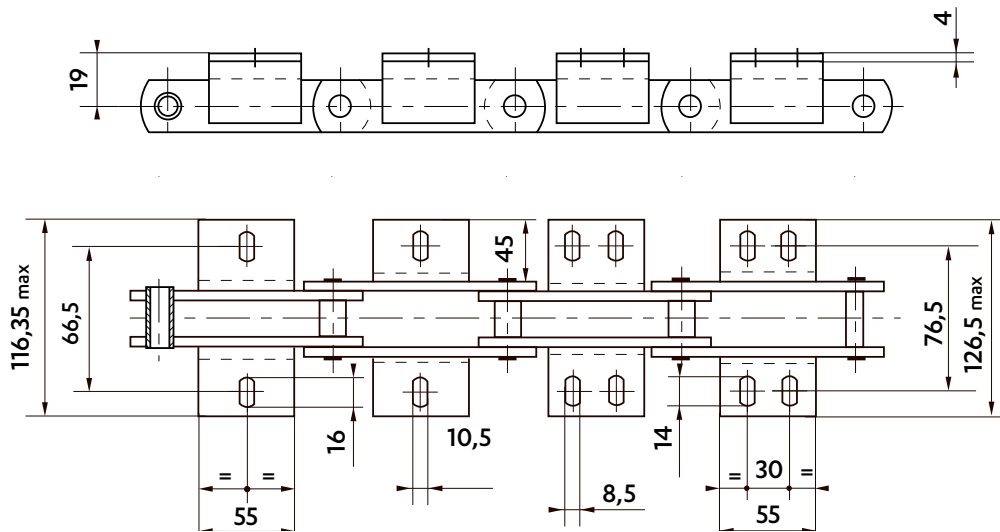
Dimensions in mm



WITH BUSHES B	WITH SMALL ROLLER S	WITH PLAIN WHEELS P	WITH FLANGED WHEELS F	Types of articulation
-------------------------	-------------------------------	-------------------------------	---------------------------------	-----------------------

Wheels in different materials can be supplied.
 * Plates' height is 27mm for stainless steel version

WELDED K1 & K2 ATTACHMENTS - 45 X 30 X 4



Frequency of attachments on request : on one or both sides of the chain, on inner and/or outer links

Pitch	Weight of the chain (Kg/m)				Weight of the attachment (Kg/piece)	
	Bush (B)	Roller (S)	Plain wheel (P)	Flanged wheel (F)	K1	K2
50	2,9	3,4	4,2	4,4	0,11	
50,8	2,9	3,4	4,1	4,4		
60	2,7	3,1	3,8	4,0		
63,5	2,6	3,0	3,5	3,8		
75	2,5	2,9	3,3	3,5		
76,2	2,5	2,8	3,3	3,5		
88,9	2,4	2,7	3,1	3,3		
100	2,3	2,6	2,9	3,1		
101,6	2,3	2,6	2,9	3,1		
125	2,2	2,4	2,7	2,8		
127	2,2	2,4	2,7	2,8		
150	2,1	2,1	2,5	2,5		

Despatch possible within 2 weeks
 Intermediate pitches are on request

Dimensions in mm

STANDARD CHAIN WHEELS

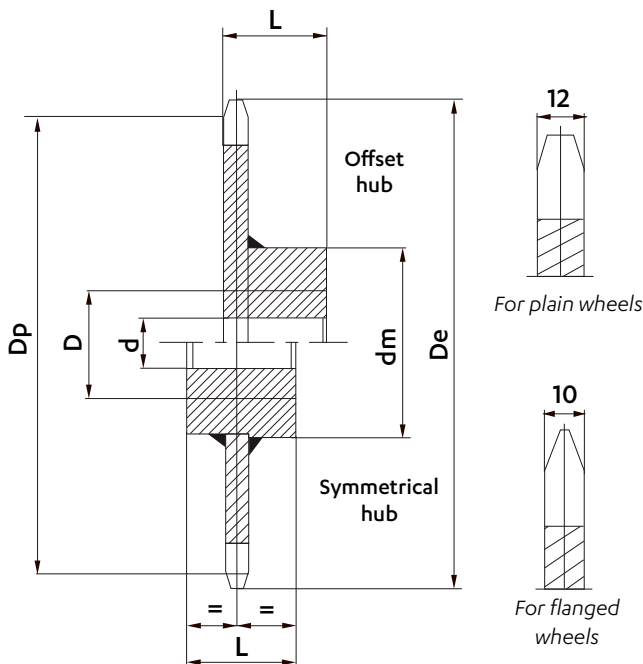
Sedis wheels are supplied made of machine-welded steel or of cast iron in some cases.

Teeth are raw casting or flame-cut, or machined for bush chains. Wheels can be supplied bored and keyed.

For wheels with offset hub, the entry point of the key is placed at the same side as the teeth, unless specified otherwise.

We can make on request:

- wheels with machined teeth
- wheels with a different number of teeth
- special wheels



Pitch	Number of teeth	Dimensions (mm)						Weight (kg/p)
		Dp	De	d	D	Dm	L	
50**	8	130,66	145	25	35	70	40	2
	10	161,80	177	30	50	100	40	4
	12	193,19	208	30	50	100	50	5
50,8**	8	132,75	147	25	35	70	40	2
	10	164,39	179	30	50	100	50	4
	12	196,28	211	30	35	100	50	5
60	8	156,79	172	25	50	100	50	4
	10	194,16	209	30	50	100	50	6
	12	231,82	247	30	60	115	65	8
63,5	8	165,93	181	25	50	100	50	4
	10	205,49	220	30	50	100	50	6
	12	245,35	260	30	60	115	65	8
75	8	195,98	211	25	50	100	50	6
	10	242,71	257	30	60	115	65	8
	12	289,78	304	30	60	115	65	11
76,2	8	199,12	214	25	50	100	50	6
	10	246,59	261	30	60	115	65	8
	12	294,41	309	30	60	115	65	11
88,9	8	232,31	247	25	50	100	50	8
	10	287,69	302	30	60	115	65	10
	12	343,48	358	30	60	115	65	14
100	8	261,31	276	30	60	115	65	9
	10	323,61	338	30	60	115	65	12
	12	386,37	401	30	70	120	75	16
101,6	8	265,49	280	30	60	115	65	9
	10	328,78	344	30	60	115	65	12
	12	392,55	407	30	70	200	75	16
125*	8	326,64	341	30	60	115	65	13
	10	404,51	419	30	60	115	65	18
	12	482,96	498	30	70	120	75	23
127*	8	331,87	347	30	60	115	65	13
	10	410,98	426	30	60	115	65	18
	12	490,69	505	30	70	120	75	23

Despatch possible within 2 weeks

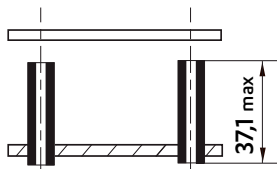
*: For chain wheels meshing with chains fitted with K attachment plates, the outside diameter of the wheel must be reduced:

- De = 337 for an 8 tooth wheel, 125mm pitch
- De = 330 for an 8 tooth wheel, 127mm pitch

** : 50mm pitch wheels cannot be used with chains with flanged wheels.

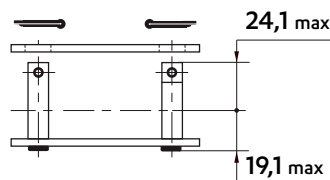
CONNECTING LINKS

REF N° 205
Outer link to be riveted



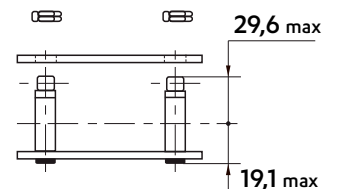
REF N° 208
Cottered connecting link

Warning: solid pins

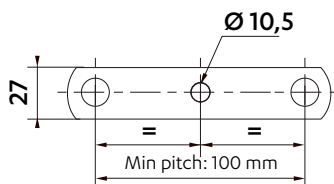


REF N° 209
Connecting link with self-locking nuts

Warning: solid pins

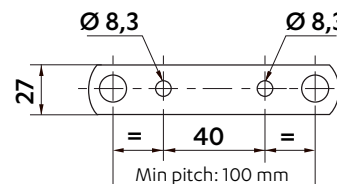


DRILLED PLATES



1 HOLE

On outer and inner plates



2 HOLES