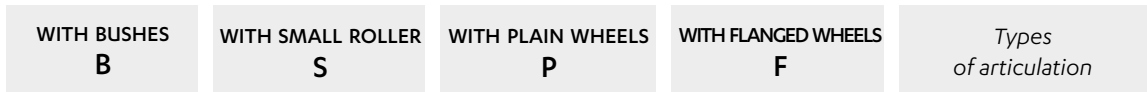
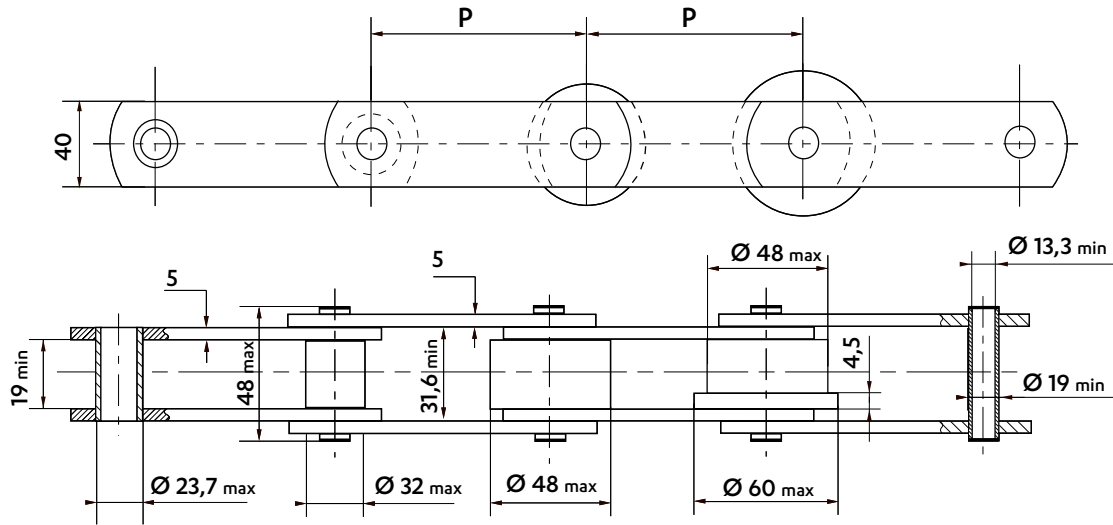


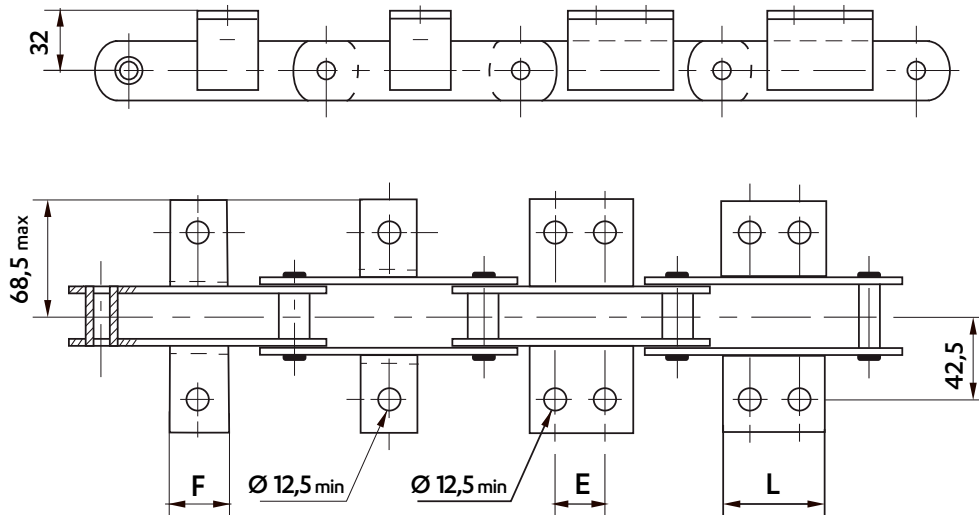
BS STANDARD CHAINS - **MC55 (ZM 54)**

Dimensions in mm



Wheels in different materials can be supplied.

WELDED K1 & K2 ATTACHMENTS - 45 X 45 X 4,5



Frequency of attachments on request : on one or both sides of the chain, on inner and/or outer links

Pitch	Attachment dimensions (mm)								Weight of the chain (Kg/m)				Weight of the attachment (Kg/piece)			
	K1		K2C		K2M		K2M		Bush (B)	Roller (S)	Plain wheel (P)	Flanged wheel (F)	K1	K2		
75	◆	◆	◆	◆	◆	◆	◆	◆	4,4	5,1	7,0	-	-	-	-	-
76,2	◆	◆	◆	◆	◆	◆	◆	◆	4,4	5,1	7,0	-	-	-	-	-
88,9	◆	◆	◆	◆	◆	◆	◆	◆	4,1	4,7	6,3	6,9	-	-	-	-
100	45	◆	◆	◆	◆	◆	◆	◆	4,0	4,5	6,0	6,5	-	-	-	-
101,6	45	◆	◆	◆	◆	◆	◆	◆	4,0	4,5	6,0	6,4	-	-	-	-
125	45	32	55	◆	◆	◆	◆	◆	3,8	4,2	5,4	5,8	-	-	-	-
127	45	32	55	◆	◆	◆	◆	◆	3,8	4,4	5,4	5,7	-	-	-	-
150	45	58	85	58	85	◆	◆	◆	3,6	4,0	4,9	5,2	0,18	-	-	-
152,4	45	58	85	58	85	◆	◆	◆	3,6	3,9	4,9	5,2	-	0,28	-	-
175	45	90	118	58	85	90	118	◆	3,5	3,7	4,6	5,0	-	-	0,28	-
200	45	90	118	58	85	90	118	◆	3,4	3,6	4,3	4,7	-	-	-	0,43
250	45	90	118	58	85	90	118	◆	3,3	3,4	3,9	4,2	-	-	-	-

Despatch possible within 2 weeks

◆ Not standard : possible to make on request.

Dimensions in mm

## STANDARD CHAIN WHEELS

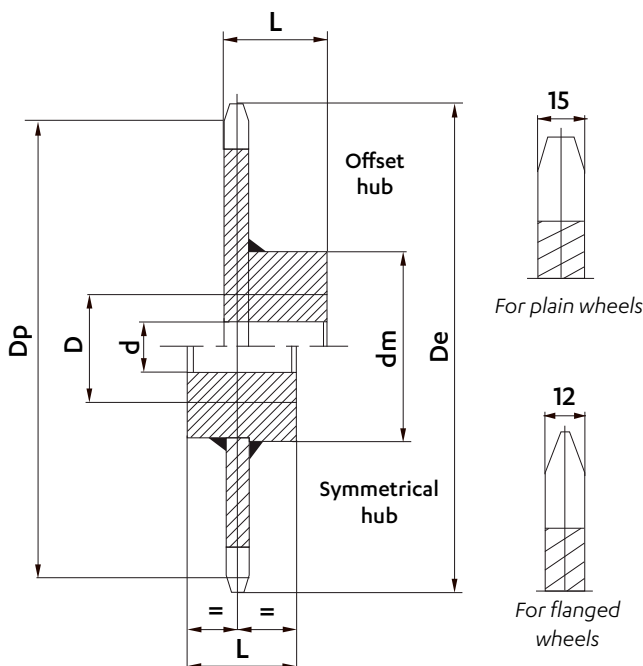
Sedis wheels are supplied made of machine-welded steel or of cast iron in some cases.

Teeth are raw casting or flame-cut, or machined for bush chains. Wheels can be supplied bored and keyed.

For wheels with offset hub, the entry point of the key is placed at the same side as the teeth, unless specified otherwise.

We can make on request:

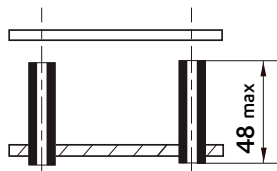
- wheels with machined teeth
- wheels with a different number of teeth
- special wheels



Pitch	Number of teeth	Dimensions (mm)						Weight (kg/p)
		Dp	De	d	D	Dm	L	
75	8	195,98	215	25	50	120	80	7
	10	242,71	262	30	60	120	80	9
	12	289,78	309	30	60	120	80	14
76,2	8	199,12	218	25	50	120	80	7
	10	246,59	266	30	60	120	80	9
	12	294,41	313	30	60	120	80	14
88,9	8	232,31	251	25	50	120	80	9
	10	287,69	307	30	60	120	80	12
	12	343,48	362	30	60	120	80	17
100	8	261,31	280	30	60	120	80	11
	10	323,61	343	30	60	120	80	15
	12	386,37	405	30	70	120	80	20
101,6	8	265,49	284	30	60	120	80	11
	10	328,78	348	30	60	120	80	15
	12	392,55	412	30	70	120	80	20
125	8	326,64	346	30	60	120	80	16
	10	404,51	423	30	60	120	80	22
	12	482,96	502	30	70	120	80	29
127	8	331,87	351	30	60	120	80	16
	10	410,98	430	30	60	120	80	22
	12	490,69	510	30	70	120	80	29
150	8	391,97	411	30	70	120	80	22
	10	485,41	504	30	70	120	80	30
	12	579,56	599	40	70	120	80	39
152,4	8	398,24	417	30	70	120	80	22
	10	493,18	512	30	70	120	80	30
	12	588,83	608	40	70	120	80	39
175								
200								
250								

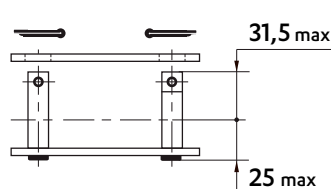
## CONNECTING LINKS

**REF N° 205**  
Outer link to be riveted



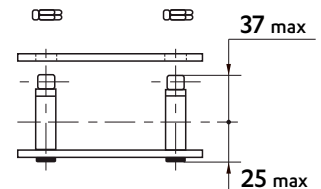
**REF N° 208**  
Cottered connecting link

Warning: solid pins



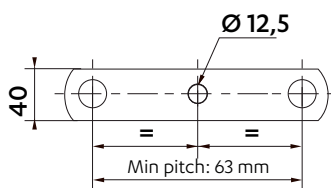
**REF N° 209**  
Connecting link with self-locking nuts

Warning: solid pins

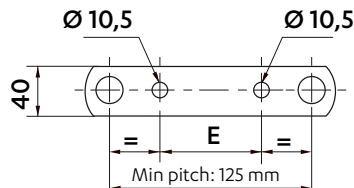


## DRILLED PLATES

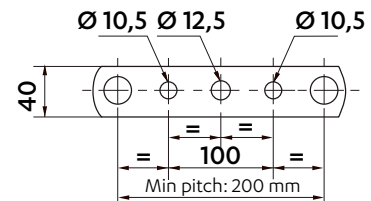
On outer and inner plates



1 HOLE



2 HOLES



3 HOLES

125mm pitch : E = 35 mm  
150mm pitch : E = 60 mm  
160mm pitch : E = 80 mm