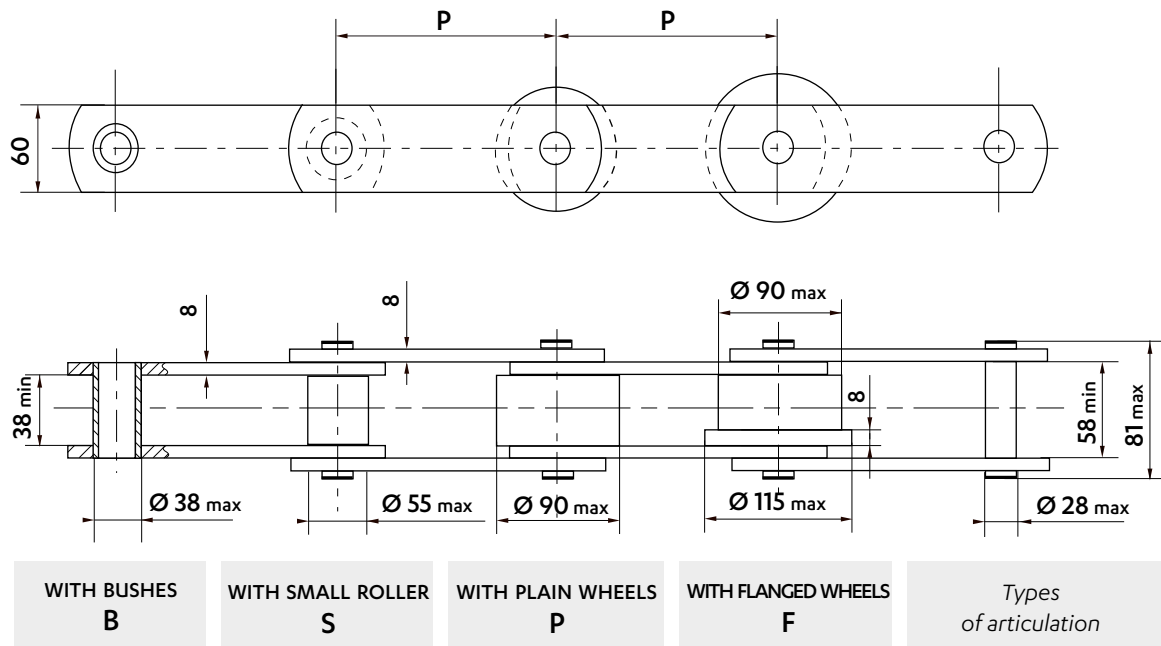


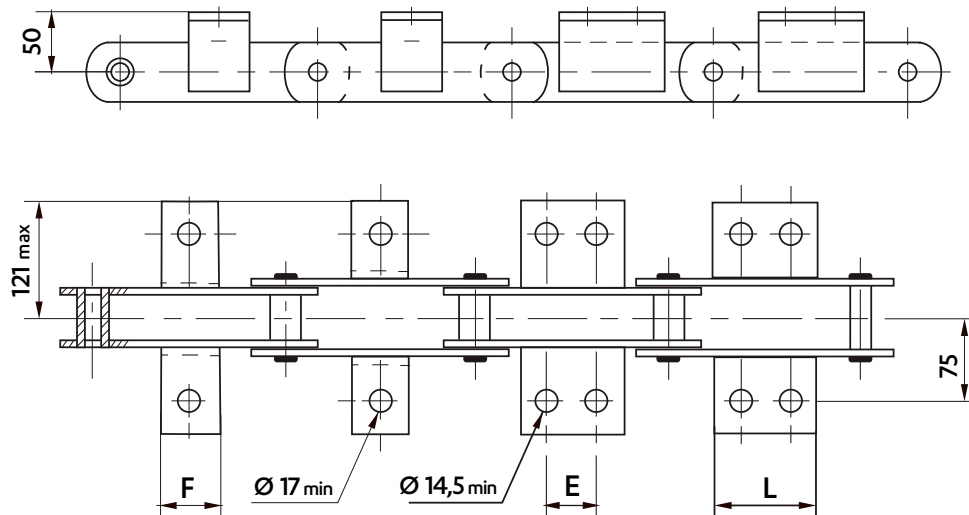
BS STANDARD CHAINS - M270

Dimensions in mm



Wheels in different materials can be supplied.

WELDED K1 & K2 ATTACHMENTS - 80 X 60 X 7



Frequency of attachments on request : on one or both sides of the chain, on inner and/or outer links

Pitch	Attachment dimensions (mm)								Weight of the chain (kg/m)				Weight of the attachment (kg/piece)			
	K1		K2C		K2M		K2L		Bush (B)	Roller (S)	Plain wheel (P)	Flanged wheel (F)	K1	K2C	K2M	K2L
125	◆	◆	◆	◆	◆	◆	◆	17,6	20,4	-	-	-	-	-	-	-
127	◆	◆	◆	◆	◆	◆	◆	17,4	20,2	-	-	-	-	-	-	-
150 *	◆	40	70	◆	◆	◆	◆	16,0	18,3	25,8	27,5	-	-	-	-	-
152,4 *	◆	40	70	◆	◆	◆	◆	15,9	18,2	25,6	27,2	-	-	-	-	-
160	70	40	70	60	70	◆	◆	15,5	18,1	24,9	26,4	-	-	-	-	-
200	70	40	70	60	70	60	90	13,9	15,7	21,3	22,5	-	-	-	-	-
203,2	70	40	70	60	70	60	90	13,9	15,6	21,2	22,4	0,31	-	-	-	-
250	70	40	70	60	70	60	90	12,7	14,1	18,6	19,6	-	-	-	-	-
254	70	40	70	60	70	60	90	12,7	14,1	18,5	19,5	-	-	-	-	-

◆ Not standard : possible to make on request.

* These pitches allow mounting of K2 attachments only on outer links

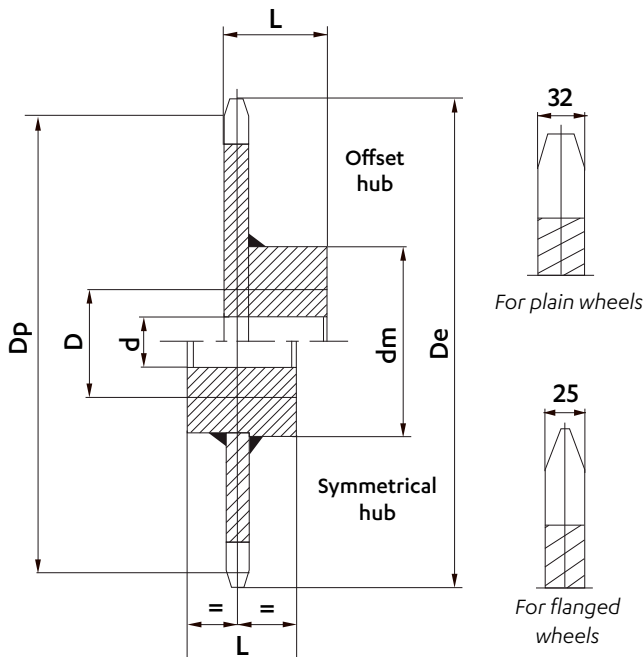
Intermediate pitches are on request

Dimensions in mm

STANDARD CHAIN WHEELS

Sedis wheels are supplied made of machine-welded steel or of cast iron in some cases. Teeth are raw casting or flame-cut, or machined for bush chains. Wheels can be supplied bored and keyed. For wheels with offset hub, the entry point of the key is placed at the same side as the teeth, unless specified otherwise.

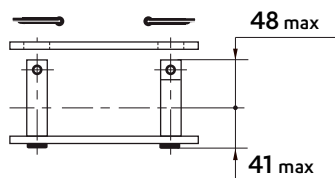
- We can make on request:
- wheels with machined teeth
 - wheels with a different number of teeth
 - special wheels



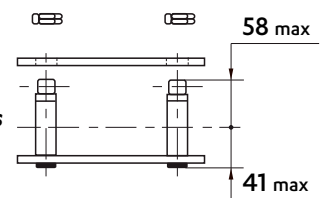
Pitch	Number of teeth	Dp	Dimensions (mm)					Weight (kg/p)
			De	d	D	Dm	L	
125	8	326,64	357	30	110	180	140	40
	10	404,51	435	30	110	180	140	60
	12	482,96	513	30	110	180	140	80
127	8	331,87	362	30	110	180	140	40
	10	410,98	441	30	110	180	140	60
	12	490,69	521	30	110	180	140	80
150	8	391,97	422	30	110	180	140	62
	10	485,41	516	30	110	180	140	79
	12	579,56	610	30	110	180	140	116
152,4	8	398,24	429	30	110	180	140	62
	10	493,18	524	30	110	180	140	79
	12	588,83	619	30	110	180	140	116
200	8	522,63	553	30	110	180	140	114
	10	647,21	678	30	110	180	140	144
	12	772,74	803	30	110	180	140	184
203,2	8	530,99	561	30	110	180	140	114
	10	657,57	688	30	110	180	140	144
	12	785,1	816	30	110	180	140	184
250	8	653,28	684	30	110	180	140	134
	10	809,02	839	30	110	180	140	174
	12	965,93	996	30	110	180	140	224
254	8	663,73	694	30	110	180	140	134
	10	821,96	852	30	110	180	140	174
	12	931,38	1012	30	110	180	140	224

CONNECTING LINKS

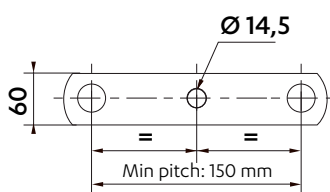
REF N° 208
Cottered connecting link



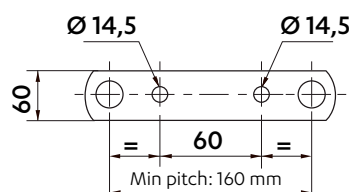
REF N° 209
Connecting link with self-locking nuts


DRILLED PLATES

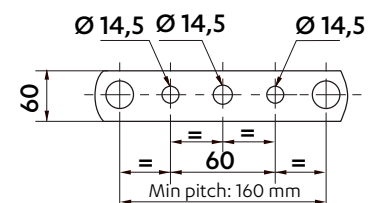
On outer and inner plates



1 HOLE



2 HOLES



3 HOLES