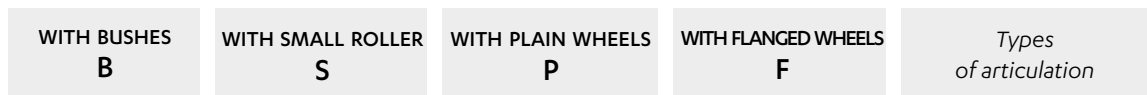
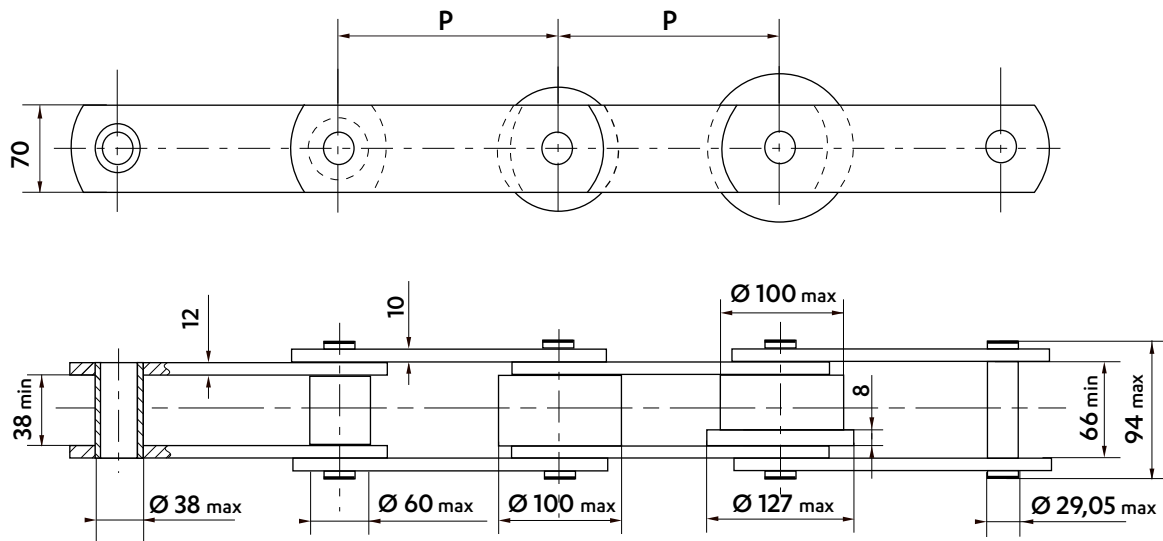


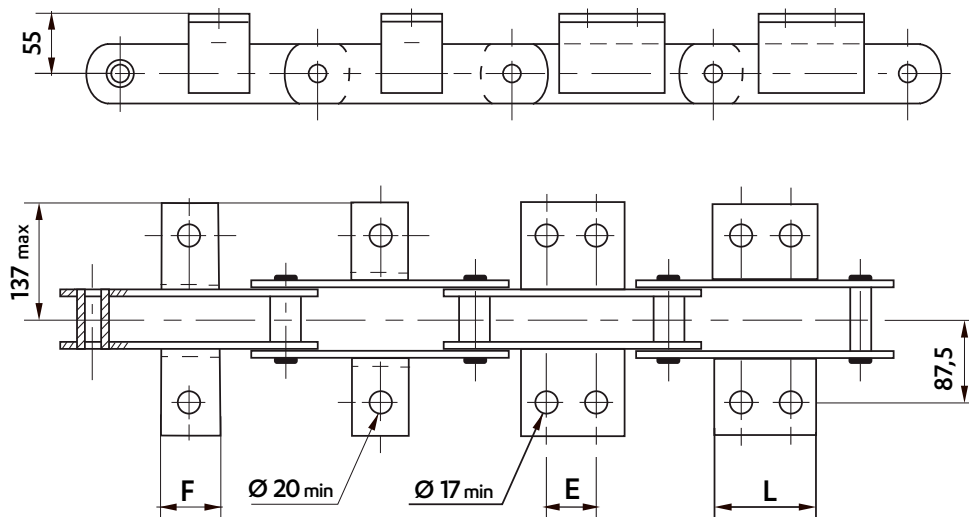
BS STANDARD CHAINS - M400

Dimensions in mm



Wheels in different materials can be supplied.

WELDED K1 & K2 ATTACHMENTS - 90 X 70 X 8



Frequency of attachments on request : on one or both sides of the chain, on inner and/or outer links

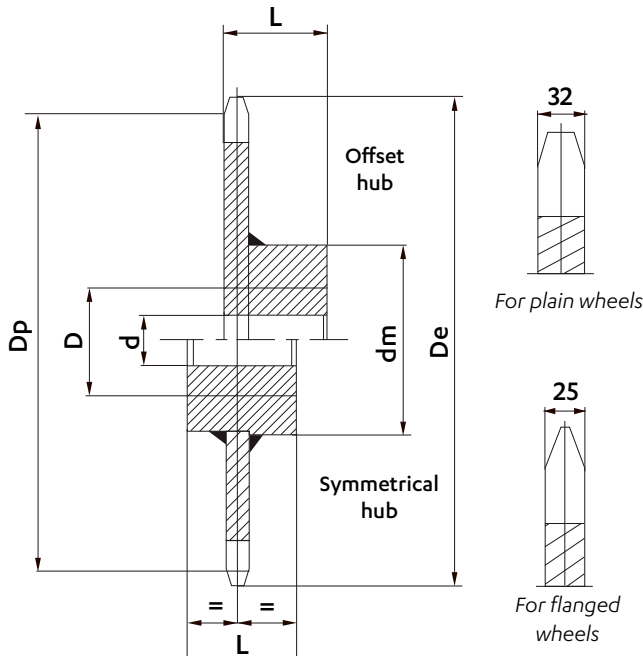
Pitch	Attachment dimensions (mm)			Weight of the chain (Kg/m)				Weight of the attachment (Kg/piece)	
	K1 F	K2C E	L	Bush (B)	Roller (S)	Plain wheel (P)	Flanged wheel (F)	K1	K2C
150	♦	♦		23,0	26,2	35,7	37,7	-	-
152,4	♦	♦		22,9	26,0	35,4	37,3	-	-
160	70	♦		22,3	25,3	34,2	36,1		-
200 *	70	55	130	20,3	22,7	29,8	31,3	0,68	1,25
203,2 *	70	55	130	20,1	22,5	29,4	30,9		
250	70	55	130	18,7	20,6	26,3	27,5		
254	70	55	130	18,6	20,5	26,1	24,2		

♦ Not standard : possible to make on request.

* These pitches allow mounting of K2 attachments only on outer links

Intermediate pitches are on request

Dimensions in mm

STANDARD CHAIN WHEELS


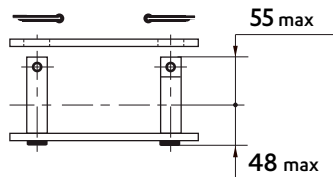
Sedis wheels are supplied made of machine-welded steel or of cast iron in some cases. Teeth are raw casting or flame-cut, or machined for bush chains. Wheels can be supplied bored and keyed. For wheels with offset hub, the entry point of the key is placed at the same side as the teeth, unless specified otherwise.

- We can make on request:
- wheels with machined teeth
 - wheels with a different number of teeth
 - special wheels

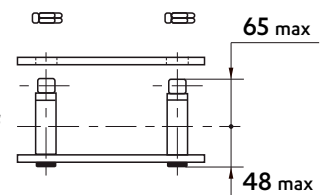
Pitch	Number of teeth	Dimensions (mm)						Weight (kg/p)
		D_p	D_e	d	D	D_m	L	
150	8	391,97	422	30	120	200	160	62
	10	485,41	516	30	120	200	160	79
	12	579,56	610	30	120	200	160	116
152,4	8	398,24	429	30	120	200	160	62
	10	493,18	524	30	120	200	160	79
	12	588,83	619	30	120	200	160	116
200	8	522,63	553	30	120	200	160	114
	10	647,21	678	30	120	200	160	144
	12	772,74	803	30	120	200	160	184
203,2	8	530,99	561	30	120	200	160	114
	10	657,57	688	30	120	200	160	144
	12	785,1	816	30	120	200	160	184
250	8	653,28	684	30	120	200	160	134
	10	809,02	839	30	120	200	160	174
	12	965,93	996	30	120	200	160	224
254	8	663,73	694	30	120	200	160	134
	10	821,96	852	30	120	200	160	174
	12	931,38	1012	30	120	200	160	224

CONNECTING LINKS

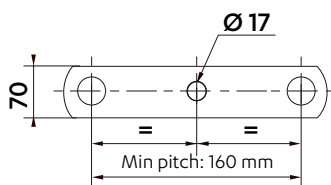
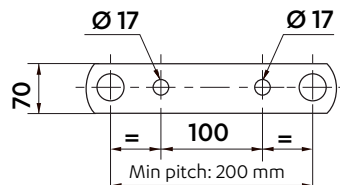
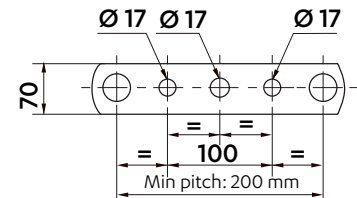
REF N° 208
Cottered connecting link



REF N° 209
Connecting link with self-locking nuts


DRILLED PLATES

On outer and inner plates


1 HOLE

2 HOLES

3 HOLES