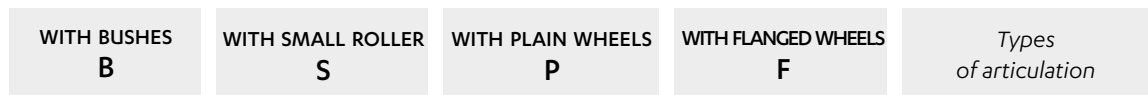
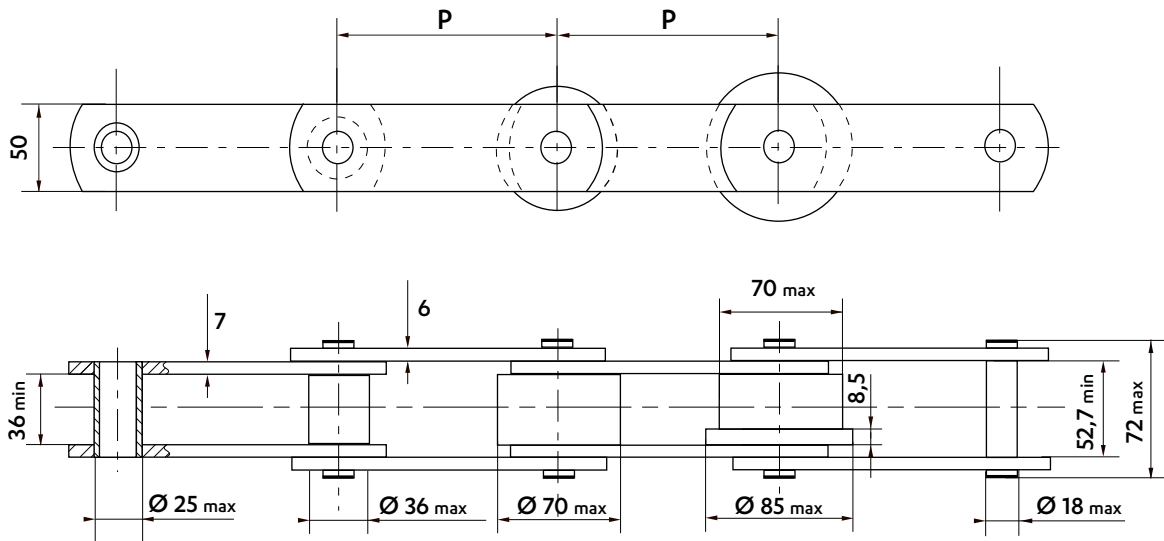


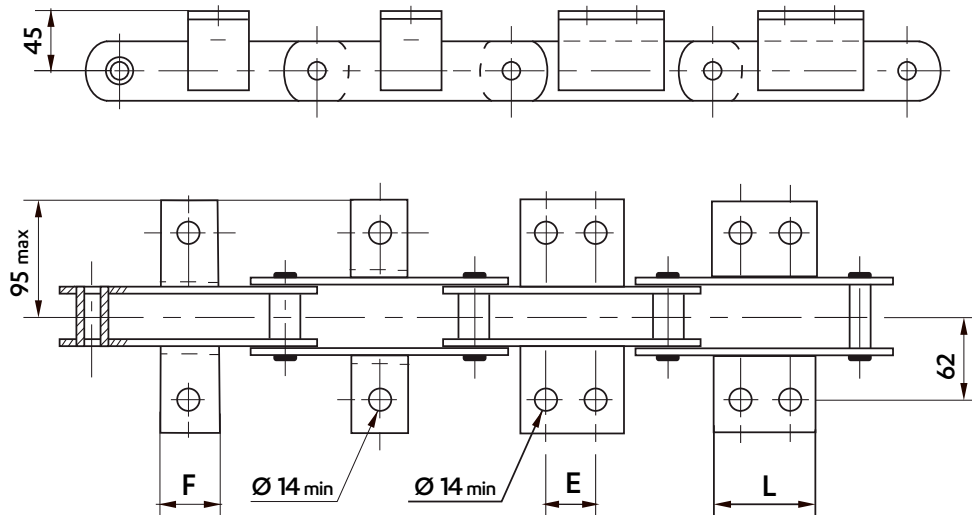
ISO STANDARD CHAINS 1977 - **M160**

Dimensions in mm



Wheels in different materials can be supplied.

WELDED K1 & K2 ATTACHMENTS - 60 X 60 X 6



Frequency of attachments on request : on one or both sides of the chain, on inner and/or outer links

Pitch	Attachment dimensions (mm)							Weight of the chain (Kg/m)				Weight of the attachment (Kg/piece)			
	K1		K2C		K2M		K2L	Bush (B)	Roller (S)	Plain wheel (P)	Flanged wheel (F)	K1	K2C	K2M	K2L
	F	E	L	E	L	E	L								
100	♦	♦		♦		♦		9,2	10,6	-	-				
125	40		♦		♦		♦	8,3	9,4	15,5	16,3				
160	40	50	85		♦		♦	7,5	8,4	13,2	13,8				
200	40	50	85	85	120		♦	7,0	7,7	11,6	12,1	0,19	0,46	0,65	0,97
250	40	50	85	85	120	145	180	6,6	7,1	10,2	10,6				
315	40	50	85	85	120	145	180	6,2	6,7	9,1	9,4				
400	40	50	85	85	120	145	180	5,9	6,2	8,2	8,5				
500	40	50	85	85	120	145	180	5,7	6,0	7,5	7,7				

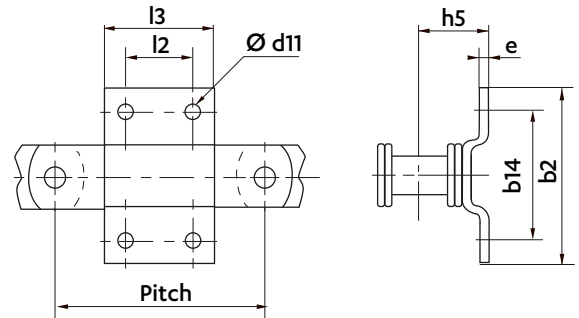
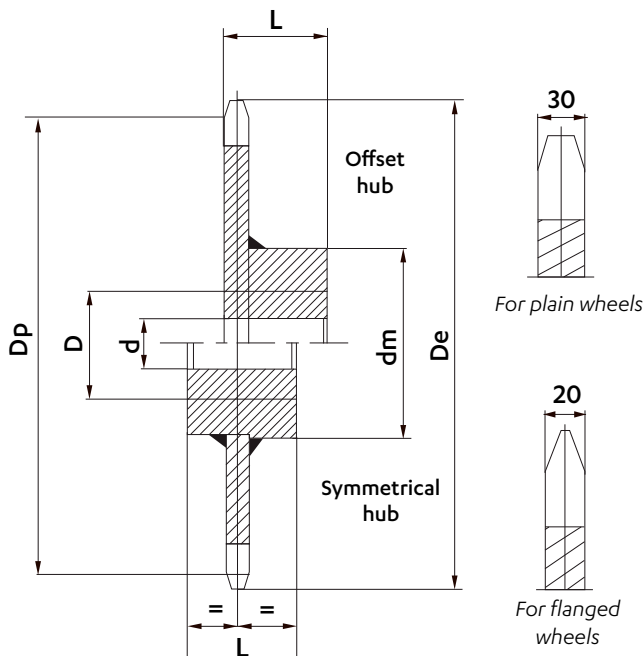
Despatch possible within 2 weeks ♦ Not standard : possible to make on request.

Intermediate pitches are on request

Dimensions in mm

WELDED G ATTACHMENTS

Pitch	l3	b2	b14	l2	d11	e	h5	Weight (kg/p)
160	70			40				0,58
200	90	120	90	55	13	6	53	0,74

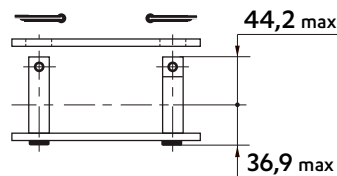
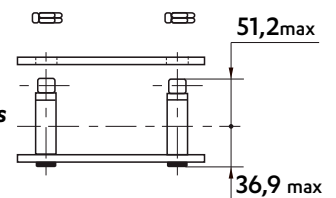

STANDARD CHAIN WHEELS


Sedis wheels are supplied made of machine-welded steel or of cast iron in some cases. Teeth are raw casting or flame-cut, or machined for bush chains. Wheels can be supplied bored and keyed. For wheels with offset hub, the entry point of the key is placed at the same side as the teeth, unless specified otherwise.

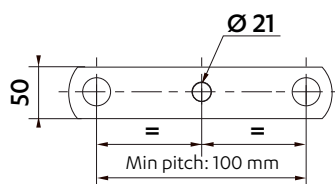
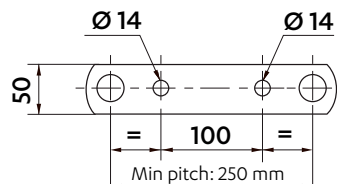
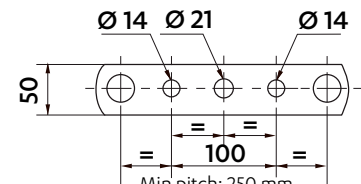
- We can make on request:
- wheels with machined teeth
 - wheels with a different number of teeth
 - special wheels

Pitch	Number of teeth	Dimensions (mm)						Weight (kg/p)
		Dp	De	d	D	Dm	L	
160	8	418,09	442	30	100	200	100	48
	10	517,77	542	30	100	200	100	56
	12	618,19	645	40	120	230	120	78
	16	820,12	848	40	120	230	120	104
200	8	522,62	544	30	100	200	100	57
	10	647,22	672	40	120	230	120	82
	12	772,74	798	40	120	230	120	99
	16	1025,16	1050	40	140	260	140	145
250	8	653,27	676	40	120	230	120	83
	10	809,02	834	40	120	230	120	105
	12	965,92	992	40	140	260	140	140
	16	1281,45	1309	40	140	260	140	191
315	8	823,12	844	40	120	230	120	107
	10	1019,37	1045	40	140	260	140	161
	12	1217,06	1243	40	120	260	140	186
	16	1614,62	1643	50	160	260	160	228

Despatch possible within 2 weeks

CONNECTING LINKS
REF N° 208
 Cottered connecting link

REF N° 209
 Connecting link with self-locking nuts

DRILLED PLATES

On outer and inner plates


1 HOLE

2 HOLES

3 HOLES